

Subject: New RJP 3.5.9 and RSS 2.8.30 Updates

From: Jim Sky <radiosky@radiosky.com>

Date: 02/28/2017 00:10

To: Richard Flagg <rf@hawaii.rr.com>, Wes Greenman <juggazer@windstream.net>, Francisco Reyes <reyes@astro.ufl.edu>, Baptiste Cecconi <baptiste.cecconi@obspm.fr>, "Whitham D. Reeve" <whit@reeve.com>, Dave Typinski <davetyp@typnet.net>, Jim Brown <starmanjb@comcast.net>, Andrew Mount <capeorion@gmail.com>, Jim Thieman <james.r.thieman@nasa.gov>, Chuck Higgins <chiggins@mtsu.edu>, "Fung, Shing F. (GSFC-6730)" <shing.f.fung@nasa.gov>, Thomas Ashcraft <ashcraft@heliotown.com>, Kazumasa Imai <imai@ee.kochi-ct.ac.jp>, Todd King <tking@igpp.ucla.edu>, Mark Sharlow <msharlow@igpp.ucla.edu>

New Radio Jupiter Pro version 3.5.9

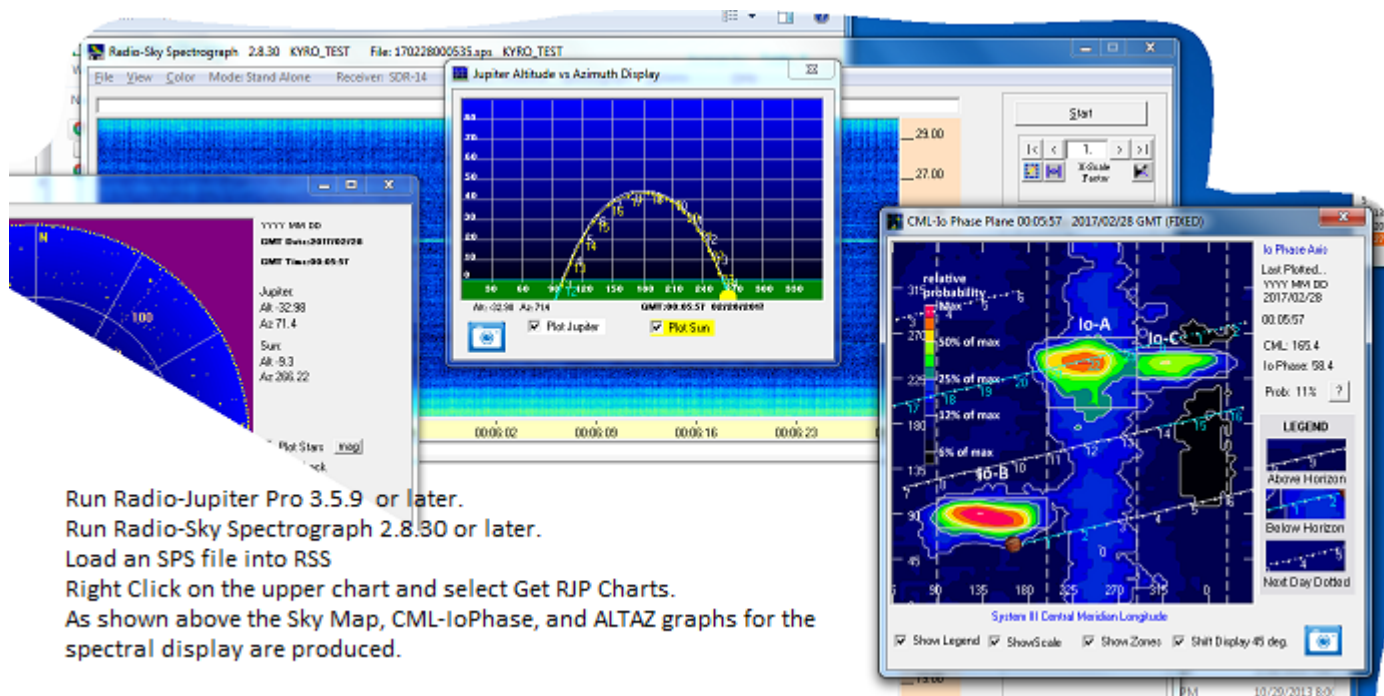
down load and run http://radiosky.com/rjp3/rjp_update_3_5_9.exe

New Radio-Sky Spectrograph 2.8.30

In Radio-Sky Spectrograph please go to **Help / Check for Updates**

=====
That's right I'm living dangerously - 2 updates in one day.

There is a reason for it though. This update affects the transfer of data between RJP and RSS. I did this mainly to help those folks who spend so much time putting together those nice observation reports for us to look at. It is very possible it won't be useful at all but please give it a look because I put a couple of days in it. Hopefully it will make documentation a bit easier.

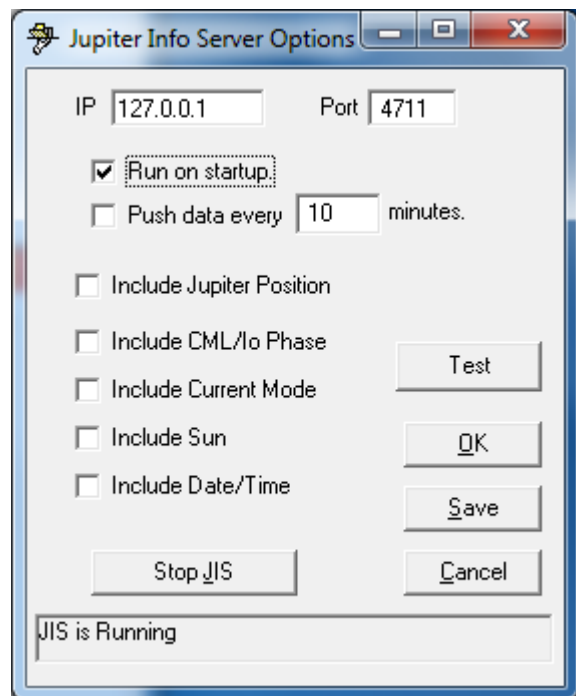


Basically, this update allows you to right click on the top spectrum display in RSS and bring up the three common RJP displays I see in your reports. Of course it does this for the time corresponding to where you clicked on on the spectrogram.

The camera button has been restored and now is available on each of the RJP displays. When you click that camera button, a snapshot is taken of the graphical area of the display and placed on to the Windows clipboard. After snapshot-ing the chart to the clipboard, it is then an easy matter to right click on your document and paste (CTRL+V) the image in. No typing and no extra image files being saved.

Configuring this to work is quite simple.

In **RJP** go to **Tools / Jupiter Information Server**



Check **Run on startup**. Click **Save**. Restart RJP.

In **RSS**, go to **Options / Network / Radio Jupiter Pro Information Server / Connect to RJP**. This option should be checked.

Other changes in RSS

You can change the number of significant digits displayed in the frequency legend to the right of the chart. Got to **View / Freq Display Significant Digits**. You can use 0 to 3 significant digits in the MHz label. Below shows the result for a label for 21.870 MHz

0	21
1	21.8
2	21.87
3	21.870

Changes in Radio-Jupiter Pro

Besides the obvious functionality enhancement when used with RSS, you will see the return of the snapshot buttons. These were lost when some code was well, believe me confusion was involved.

Aloha,

Jim S

--

Jim Sky

<http://radiosky.com>