

**Subject:** version 2.7.3 of RSS

**From:** Jim Sky <radiosky@radiosky.com>

**Date:** 12/19/2015 20:34

**To:** Richard Flagg <rf@hawaii.rr.com>, Wes Greenman <juggazer@windstream.net>, Francisco Reyes <reyes@astro.ufl.edu>, Baptiste Cecconi <baptiste.cecconi@obspm.fr>, "Whitham D. Reeve" <whit@reeve.com>, Dave Typinski <davetyp@typnet.net>, Jim Brown <starmanjb@gmail.com>, Andrew Mount <capeorion@gmail.com>, Jim Thieman <james.r.thieman@nasa.gov>, Chuck Higgins <chiggins@mtsu.edu>, "Fung, Shing F. (GSFC-6730)" <shing.f.fung@nasa.gov>, Thomas Ashcraft <ashcraft@heliotown.com>

SUGtrafugees,

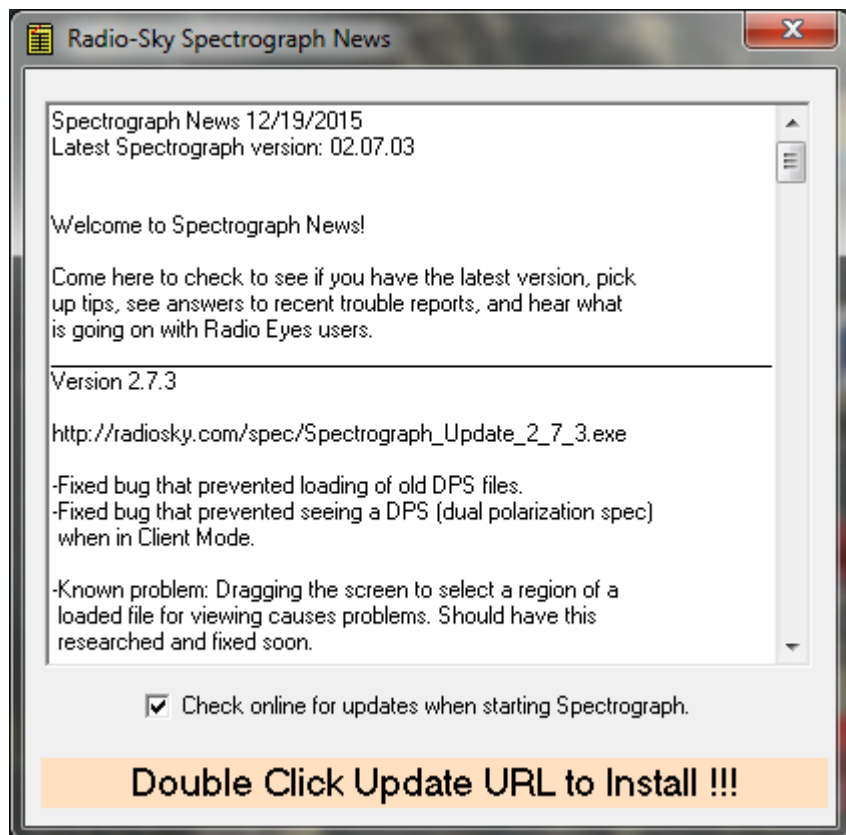
[http://radiosky.com/spec/Spectrograph\\_Update\\_2\\_7\\_3.exe](http://radiosky.com/spec/Spectrograph_Update_2_7_3.exe)

I have put up a new version of RSS that fixes two important problems.

- 1) Fixes problem reading Dave's DPS files created in older versions of RSS.
- 2) Makes it possible to receive dual polarization streams from folks serving DPS (switching or not) data.

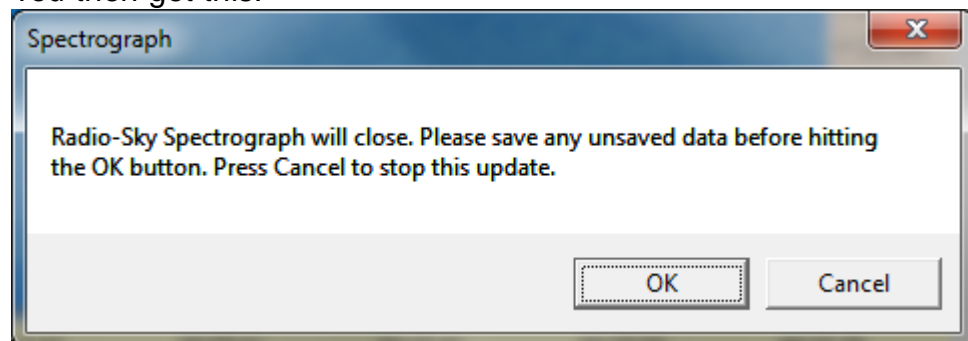
I would like to report that Jim Brown's server has consistently stayed on the available servers list since did the update to 2.7.2.

I know these updates come fast and furious and if you think they are annoying well I hear you. I hate them worse than you do. So I am trying to make the process as easy as possible. If you click on Help/Check for Updates you will get a screen like this:

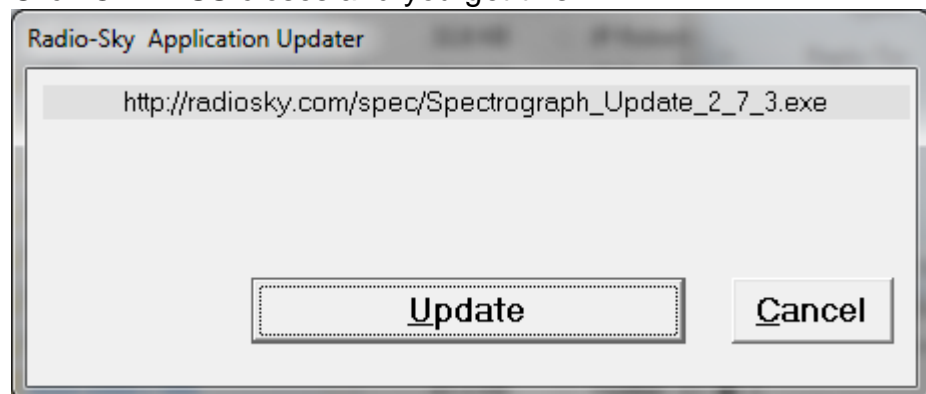


If you have version 2.7.2 or higher of RSS and Updater program will take over when you DOUBLE Click the URL of the update.

You then get this:



Click OK. RSS closes and you get this:



Click Update and it will download the installation and run the installer.

That is as easy as I can figure out how to make it work with you to still having control over it. If you do need to go back for some reason, you can click on one of the older URLs or run one of the updates that you previously ran, by locating it in the Program Files\Spectrograph\Updates folder.

SUGs a lot,  
Jim

--  
Jim Sky  
<http://radiosky.com>