

Subject: Re: RSS update

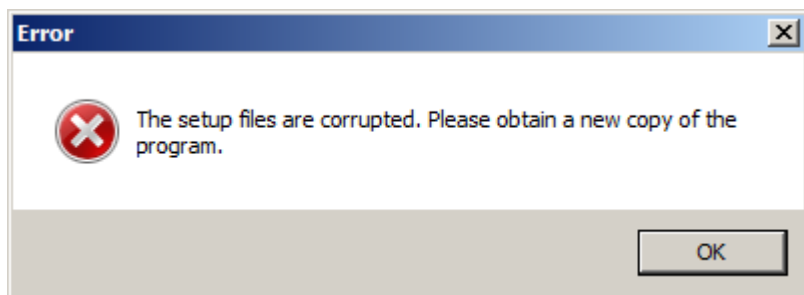
From: "Whitham D. Reeve" <whitreeve@gmail.com>

Date: 12/30/2014 14:42

To: Jim Sky <radiosky@radiosky.com>

CC: Dave Typinski <davetyp@typnet.net>, Richard Flagg <rf@hawaii.rr.com>, Chuck Higgins <chiggins@mtsu.edu>, Francisco Reyes <reyes@astro.ufl.edu>, Wes Greenman <jupgazer@windstream.net>, Jim Brown <starmanjb@comcast.net>, Andy Mount <capeorion@gmail.com>, Tom Ashcraft <ashcraft@heliotown.com>, Jim Thieman <james.r.thieman-1@nasa.gov>

Hi Jim - When I first tried the latest update, it showed an endless cycle of downloading. I tried a couple times and the last time I just let it go to see what happened. Eventually, this error window popped up:



However, about a minute later the installation window appeared and I was able to complete the installation.

Not sure what happened, but I now have v2.4.20 running.

Whit

On Tue, Dec 30, 2014 at 7:26 PM, Jim Sky <radiosky@radiosky.com> wrote:

Whit pointed out a problem with the installation.

I have fixed the version problem in the installation script. Please try doing the update again.

Sorry for the trouble,
Jim

On 12/30/2014 1:30 AM, Whitham D. Reeve wrote:

Hi Jim - I ran RSS and it alerted me about the update. I double-clicked the link and downloaded and ran it with no problems. However, when I restarted RSS, it still showed v2.4.19.

I repeated above but RSS still showed v2.4.19.

I also tried manually downloading and installing the update but got same results. The spectrograph.exe file in my Program Files is date-stamped 12/15/2014 and it is v2.4.19.

Whit

On Mon, Dec 29, 2014 at 8:30 PM, Jim Sky <radiosky@radiosky.com> wrote:

Version 2.4.20

- Changed Correction File from tab delimited to comma delimited format (*.csv) so that it can be directly loaded into a spreadsheet program.
- Updated RTL Bridge to allow connection to a rtl_tcp stream from another computer. Previously RTL Bridge had to run on the same PC as rtl_tcp.exe using the fixed loopback address of 127.0.0.1 and port 1234. These are still the default values.

http://radiosky.com/spec/Spectrograph_Update_2_4_20.exe

--

Whitham D. Reeve
Anchorage, Alaska USA

--

Whitham D. Reeve
Anchorage, Alaska USA
