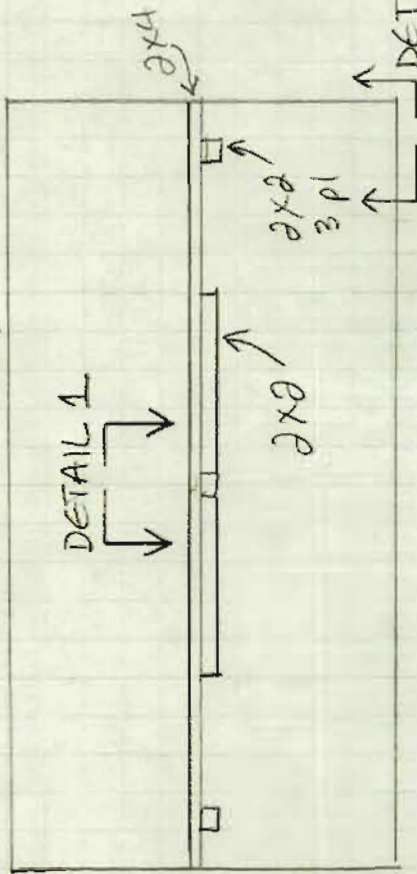
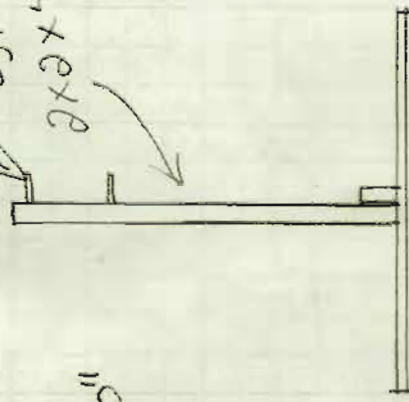


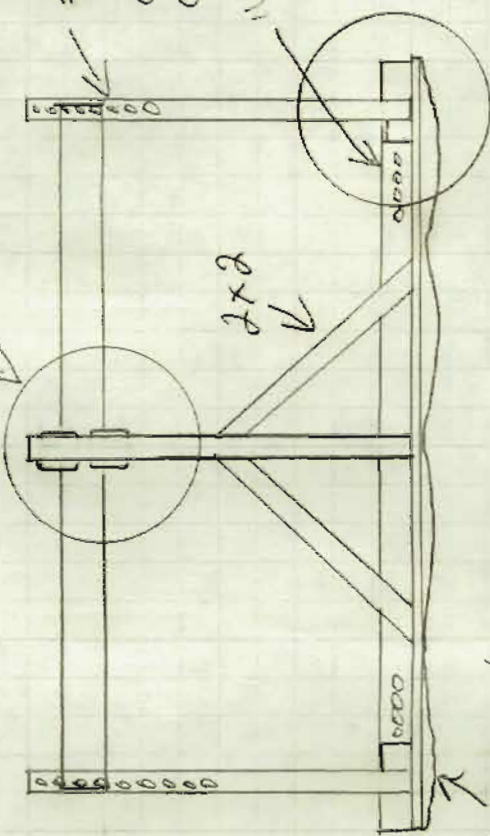
4x8 plywood



slip fit
1/8" dowels
placed as
needed
typ. 4 pl.



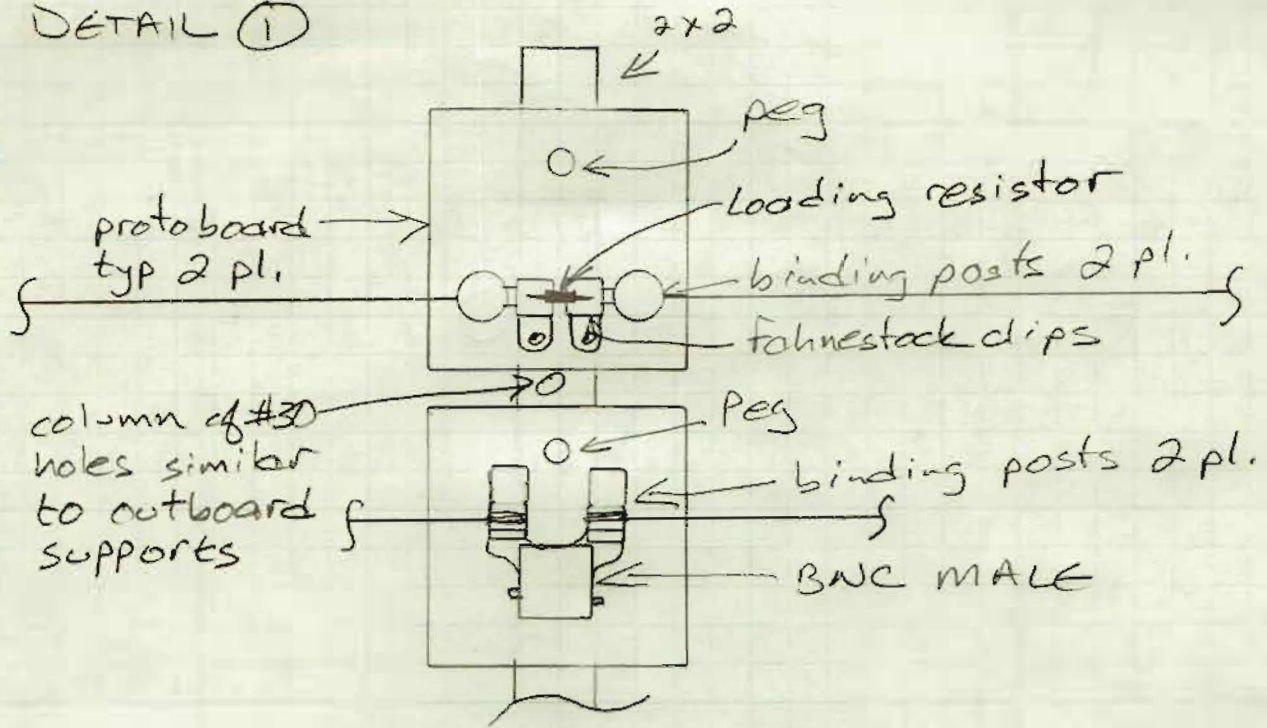
#30 drill
holes on 0.400" or 0.200"
centers
1/8" drill
holes on 2.4"
centers



optional ground screen
stapled to bottom of plywood

see pg 2 Detail 2

DETAIL ①



DETAIL ②

