

Plug-In Low Noise Amplifier

AMP-77+ AMP-77

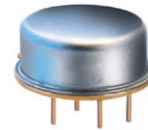
50Ω 5 to 500 MHz

Features

- low noise, 3.3 dB typ.
- high IP3, +32 dBm typ.
- hermetic, TO-8 can

Applications

- military, hi-rel applications
- small signal amplifier
- VHF/UHF



CASE STYLE: PP120
PRICE: \$60.45 ea. Qty. (1-9)

+ RoHS compliant in accordance with EU Directive (2002/95/EC)

The +Suffix identifies RoHS Compliance. See our web site for RoHS Compliance methodologies and qualifications.

Low Noise Amplifier Electrical Specifications

MODEL NO.	FREQUENCY (MHz)		NOISE FIGURE (dB)	GAIN (dB)			MAXIMUM POWER (dBm)		INTERCEPT POINT (dBm)	VSWR (:1) Typ.		DC POWER	
	f _L	f _U		Typ.	Min.	m	Total Range	Output (1 dB Compr.)		Input (no damage)	IP3 Typ.	In	Out
AMP-77(+)	5	500	3.3	15	±0.4	±1.0	+16	+13	+32	2.0	2.0	15	56

m = mid range [2 f_L to f_U/2]

Open load is not recommended, potentially can cause damage.
With no load derate max input power by 20 dB

Pin Connections

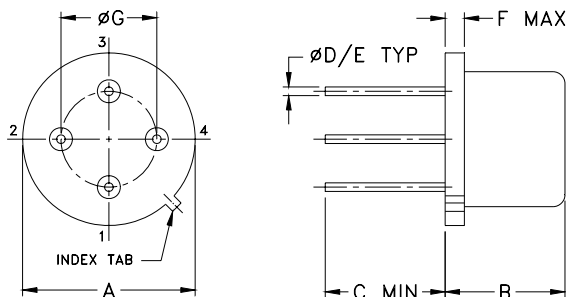
RF IN	2
RF OUT	4
DC	1
GROUND	3
CASE GROUND	3

Maximum Ratings

Operating Temperature	-54°C to 85°C
Storage Temperature	-55°C to 100°C
DC Voltage	+17V Max.

Permanent damage may occur if any of these limits are exceeded.

Outline Drawing



Outline Dimensions (inch/mm)

A	B	C	D	E	F	G	wt
.50	.21	.15	.016	.020	.04	.300	grams
12.70	5.33	3.81	0.41	0.51	1.02	7.62	1.5

Mini-Circuits®
ISO 9001 ISO 14001 AS 9100 CERTIFIED
The Design Engineers Search Engine Provides ACTUAL Data Instantly at minicircuits.com
IF/RF MICROWAVE COMPONENTS

For detailed performance specs & shopping online see web site

P.O. Box 350166, Brooklyn, New York 11235-0003 (718) 934-4500 Fax (718) 332-4661

Notes: 1. Performance and quality attributes and conditions not expressly stated in this specification sheet are intended to be excluded and do not form a part of this specification sheet. 2. Electrical specifications and performance data contained herein are based on Mini-Circuit's applicable established test performance criteria and measurement instructions. 3. The parts covered by this specification sheet are subject to Mini-Circuits standard limited warranty and terms and conditions (collectively, "Standard Terms"); Purchasers of this part are entitled to the rights and benefits contained therein. For a full statement of the Standard Terms and the exclusive rights and remedies thereunder, please visit Mini-Circuits' website at www.minicircuits.com/MCLStore/terms.jsp.

REV. A
M106610
AMP-77
070502
Page 1 of 2

Typical Performance Data/Curves

FREQUENCY (MHz)	GAIN (dB)			DIRECTIVITY (dB)			VSWR (:1)		NOISE FIGURE (dB)	P _{OUT} at 1 dB COMPR. (dBm)
	12V	15V	16V	12V	15V	16V	IN	OUT		
5.00	16.26	16.25	16.23	5.00	5.00	5.10	1.49	1.57	—	18.30
11.30	16.55	16.58	16.55	4.30	4.30	4.30	1.25	1.25	3.30	18.96
33.40	16.75	16.79	16.76	3.80	3.80	3.80	1.13	1.09	3.27	19.66
98.80	16.74	16.77	16.76	3.50	3.50	3.50	1.11	1.16	3.30	19.68
195.40	16.55	16.59	16.57	2.90	3.00	3.00	1.13	1.35	3.24	19.62
246.20	16.43	16.47	16.46	2.50	2.70	2.70	1.15	1.41	3.24	19.49
309.60	16.27	16.32	16.28	2.20	2.30	2.40	1.18	1.47	3.27	19.24
373.10	16.13	16.19	16.14	1.80	1.90	2.00	1.21	1.45	3.25	19.08
436.50	16.04	16.08	16.04	1.40	1.60	1.70	1.23	1.44	3.26	19.11
500.00	15.92	15.98	15.93	1.10	1.30	1.40	1.24	1.36	3.28	19.25

