

**File Information – Raw Data**

Local name: AJ4CO DPS–XTFD  
 Input file: R:\Observation Records\AJ4CO\_DPS–XTFD\1307\130705\130706015208.sps  
 RSS version: 2.2.14  
 Chart start: 05–July–2013 15:36:00.055 UTC  
 Chart end: 05–July–2013 15:41:00.071 UTC

Local name: AJ4CO DPS–XTFD  
 Chart location: Florida  
 Latitude: (N) +29.000000 degrees  
 Longitude: (E) +82.000000 degrees  
 Time zone: UTC+0  
 Observer: Typinski

Data source: < not specified >  
 Data duration: 300.016 s  
 Sweep start: 32.920 MHz  
 Sweep end: 17.000 MHz  
 Sweeps: 2862  
 Sweep rate: 9.539 Hz  
 Channels: 200  
 Channel separation: 79.602 kHz  
 Channel dwell time: 524 μs

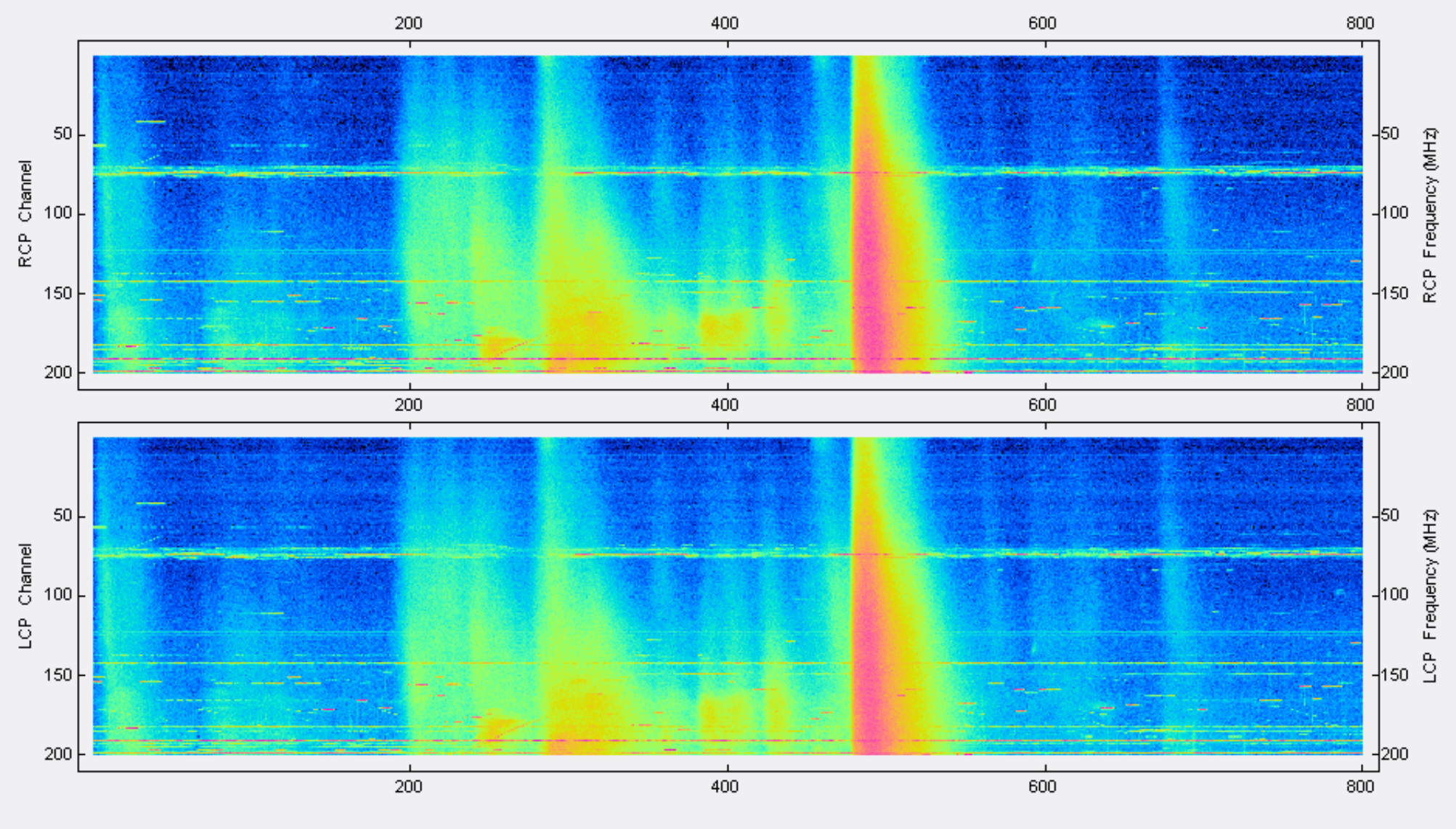
RCP ADC range (raw): 1186 mV min to 3875 mV max  
 LCP ADC range (raw): 1281 mV min to 3694 mV max

Data note length: 75  
 Data note: «[+SWEEPS2862yLOWF1700000yHIF3300000ySTEPS200yDUALSPECFILETrueyRCVRy=]»

Correction array: R:\Observation Records\AJ4CO\_DPS–XTFD\1305\130522\130522\_Correction\_Array.csv

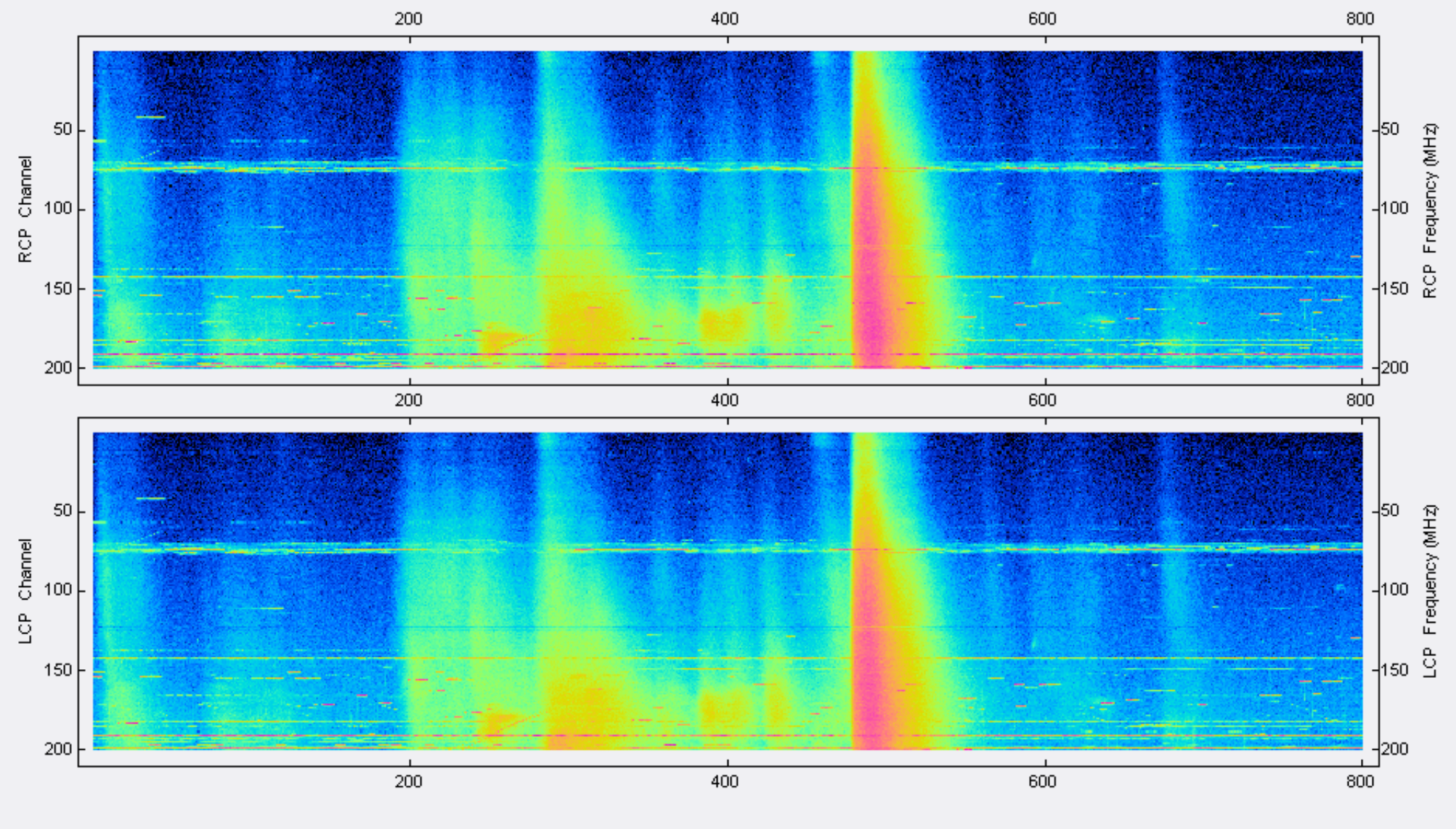
**Spectrograms – Decimated**

Color file: C:\Program Files\Spectrograph\AJ4CO–Rainbow.txt  
 Color offset: 1550  
 Color gain: 1.8  
 Data: 2862 sweeps  
 Decimated to: 800 sweeps (decimation factor 3.578 )  
 Decimation method: Mean (arithmetic average)  
 RCP ADC range (decimated): 1418 mV min to 3804 mV max  
 LCP ADC range (decimated): 1433 mV min to 3599 mV max



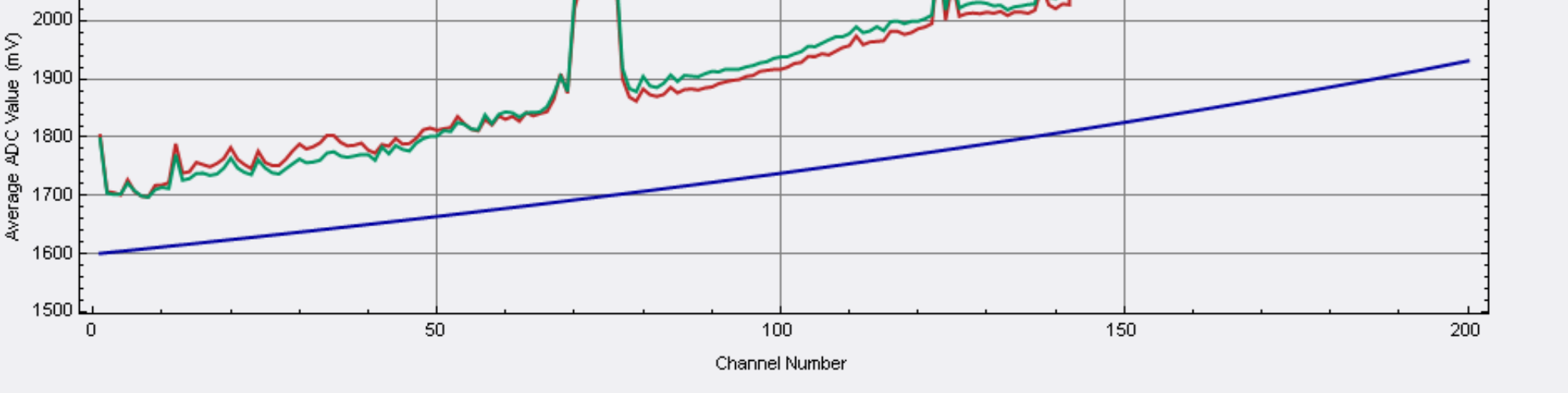
**Spectrograms – Decimated – Correction Arrays Applied**

Color file: C:\Program Files\Spectrograph\AJ4CO–Rainbow.txt  
 Color offset: 1550  
 Color gain: 1.8  
 Data: 2862 sweeps  
 Decimated to: 800 sweeps (decimation factor 3.578 )  
 Decimation method: Mean (arithmetic average)  
 RCP ADC range (decimated): 1386 mV min to 3804 mV max  
 LCP ADC range (decimated): 1377 mV min to 3599 mV max



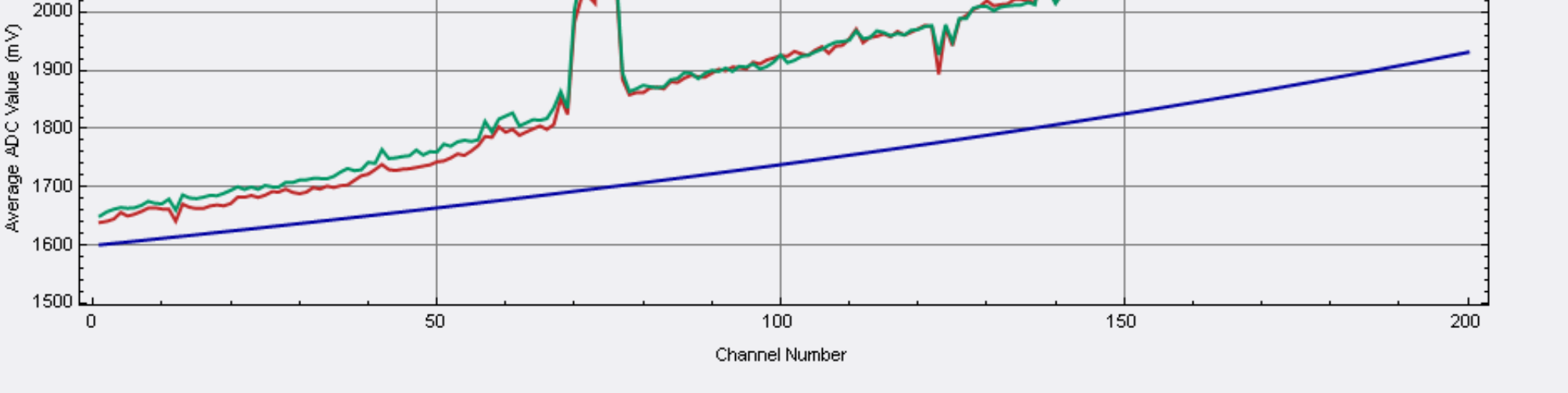
**Continua – Decimated**

RCP & LCP Continua – average of 800 sweeps decimated from 2862 sweeps (300 seconds in original data)  
 RCP = Green LCP = RED GB Model = Blue (for slope ONLY)



**Continua – Decimated – Correction Array Applied**

RCP & LCP Continua – average of 800 sweeps decimated from 2862 sweeps (300 seconds in original data)  
 RCP = Green LCP = RED GB Model = Blue (for slope ONLY)



**Strip Chart – Decimated**

RCP & LCP Strip Chart – 800 sweeps decimated from 2862 sweeps – Channel 161  
 RCP = Green LCP = RED GB Model = Blue (NOT YET MEANINGFUL)



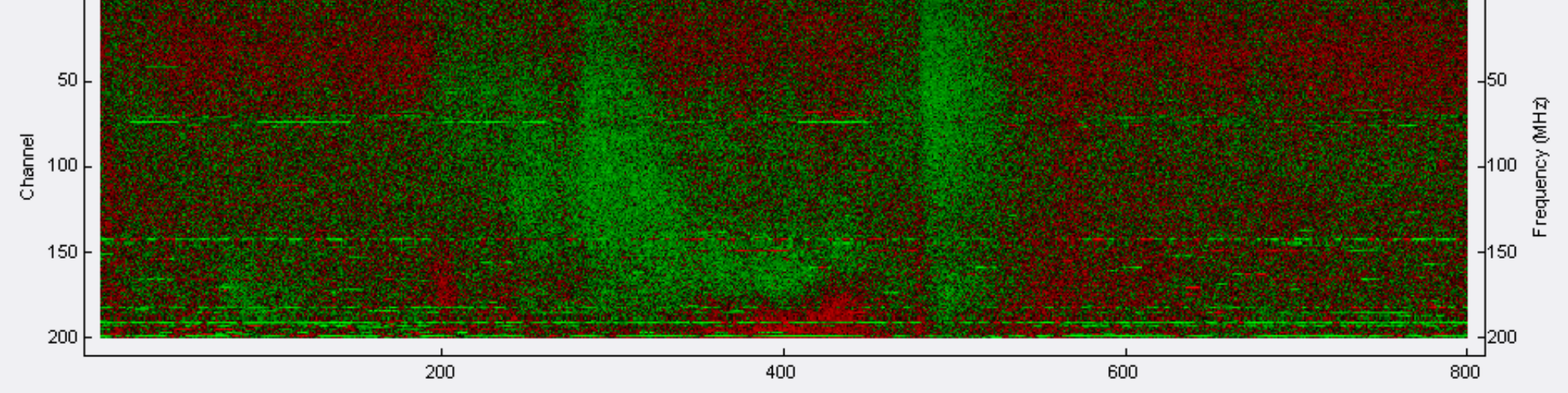
**Strip Chart – Decimated – Correction Array Applied**

RCP & LCP Strip Chart – 800 sweeps decimated from 2862 sweeps – Channel 161  
 RCP = Green LCP = RED GB Model = Blue (NOT YET MEANINGFUL)



**Cross Polarization Spectrogram – Decimated**

Color file: C:\Program Files\Spectrograph\CrossPolarization.txt  
 Color offset: –2048  
 Color gain: 3.0  
 Data: 2862 sweeps  
 Decimated to: 800 sweeps (decimation factor 3.578 )  
 Decimation method: Mean (arithmetic average)  
 RCP max: 983 mV  
 LCP max: –758 mV



**Cross Polarization Spectrogram – Decimated – Correction Array Applied**

Color file: C:\Program Files\Spectrograph\CrossPolarization.txt  
 Color offset: –2048  
 Color gain: 3.0  
 Data: 2862 sweeps  
 Decimated to: 800 sweeps (decimation factor 3.578 )  
 Decimation method: Mean (arithmetic average)  
 RCP max: 983 mV  
 LCP max: –766 mV

