

**File Information – Raw Data**

Local name: AJ4CO DPS–XTFD  
 Input file: R:\Observation Records\AJ4CO\_DPS–XTFD\1306\130611\130611151100.sps  
 RSS version: 2.2.14  
 Chart start: 11–June–2013 15:11:00.059 UTC  
 Chart end: 11–June–2013 15:14:00.006 UTC

Local name: AJ4CO DPS–XTFD  
 Chart location: Florida  
 Latitude: (N) +29.000000 degrees  
 Longitude: (E) +82.000000 degrees  
 Time zone: UTC+0  
 Observer: Typinski

Data source: < not specified >  
 Data duration: 179.947 s  
 Sweep start: 32.920 MHz  
 Sweep end: 17.000 MHz  
 Sweeps: 1717  
 Sweep rate: 9.542 Hz  
 Channels: 200  
 Channel separation: 79.602 kHz  
 Channel dwell time: 524 μs

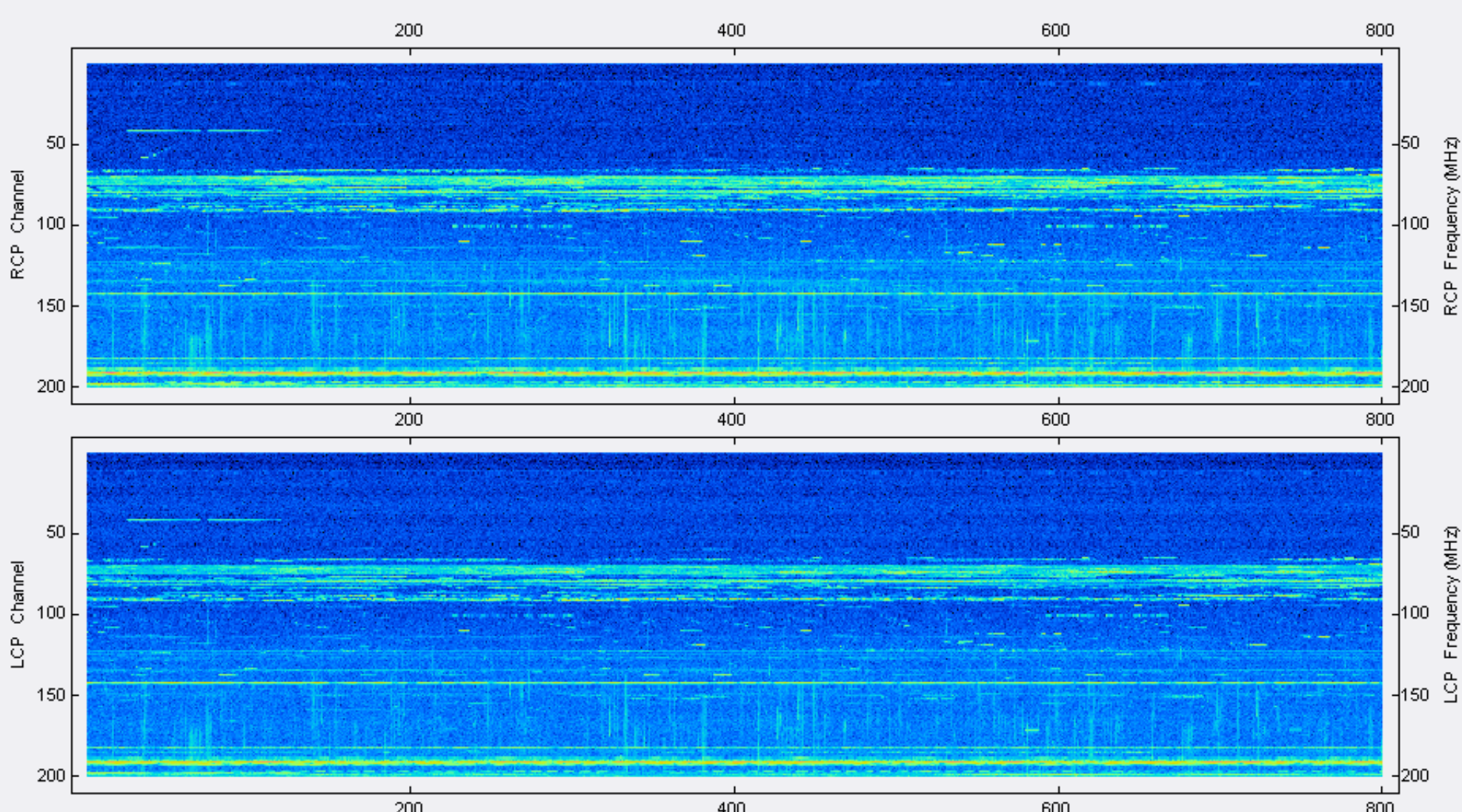
RCP ADC range (raw): 1249 mV min to 4041 mV max  
 LCP ADC range (raw): 1264 mV min to 3695 mV max

Data note length: 75  
 Data note: «[+SWEEPS1717yLOWF1700000yHIF3300000ySTEPS200yDUALSPECFILETrueyRCVRy=]»

Correction array: R:\Observation Records\AJ4CO\_DPS–XTFD\1305\130522\130522\_Correction\_Array.csv

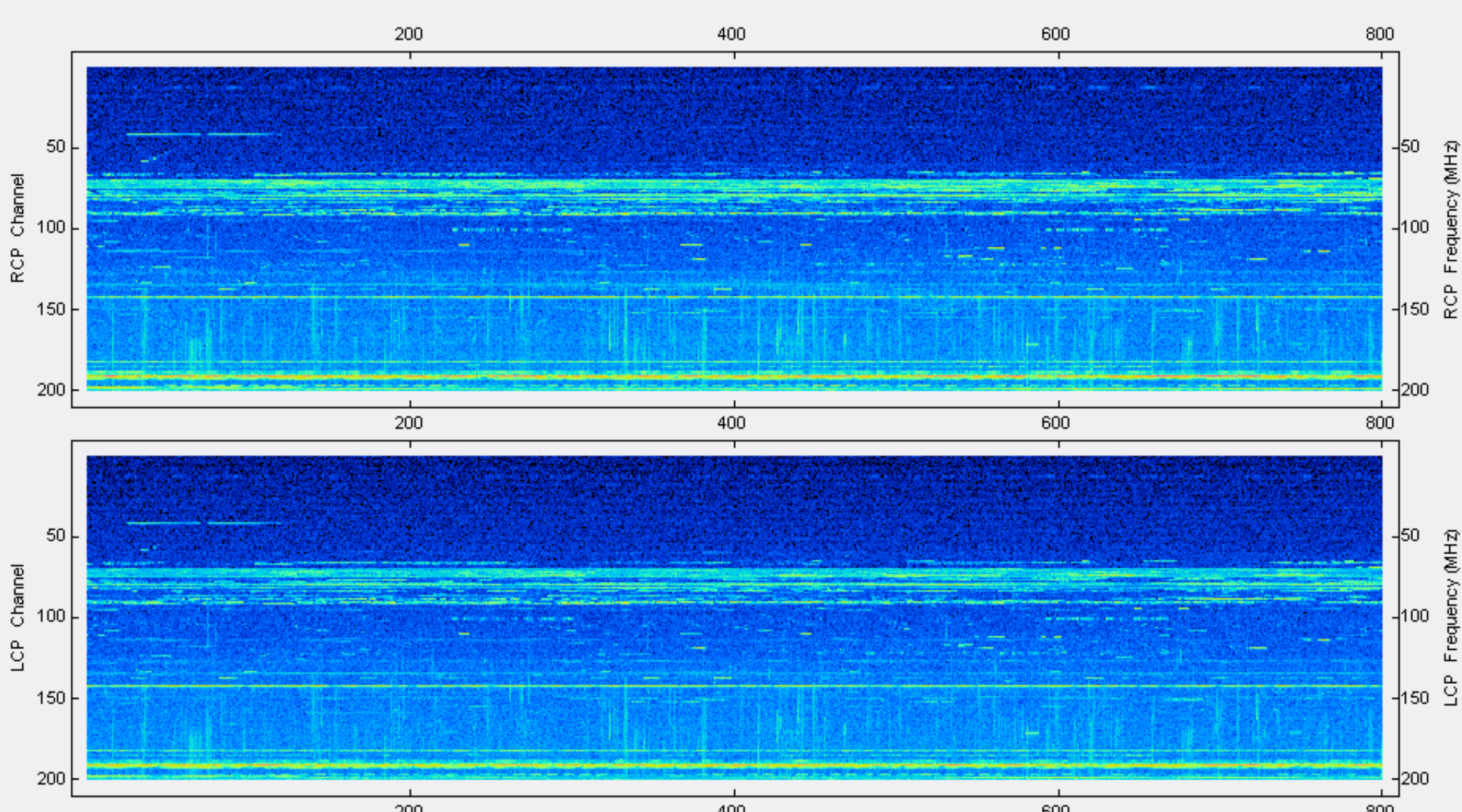
**Spectrograms – Decimated**

Color file: C:\Program Files\Spectrograph\AJ4CO–Rainbow.txt  
 Color offset: 1500  
 Color gain: 1.2  
 Data: 1717 sweeps  
 Decimated to: 800 sweeps (decimation factor 2.146 )  
 Decimation method: Mean (arithmetic average)  
 RCP ADC range (decimated): 1369 mV min to 3974 mV max  
 LCP ADC range (decimated): 1335 mV min to 3653 mV max



**Spectrograms – Decimated – Correction Arrays Applied**

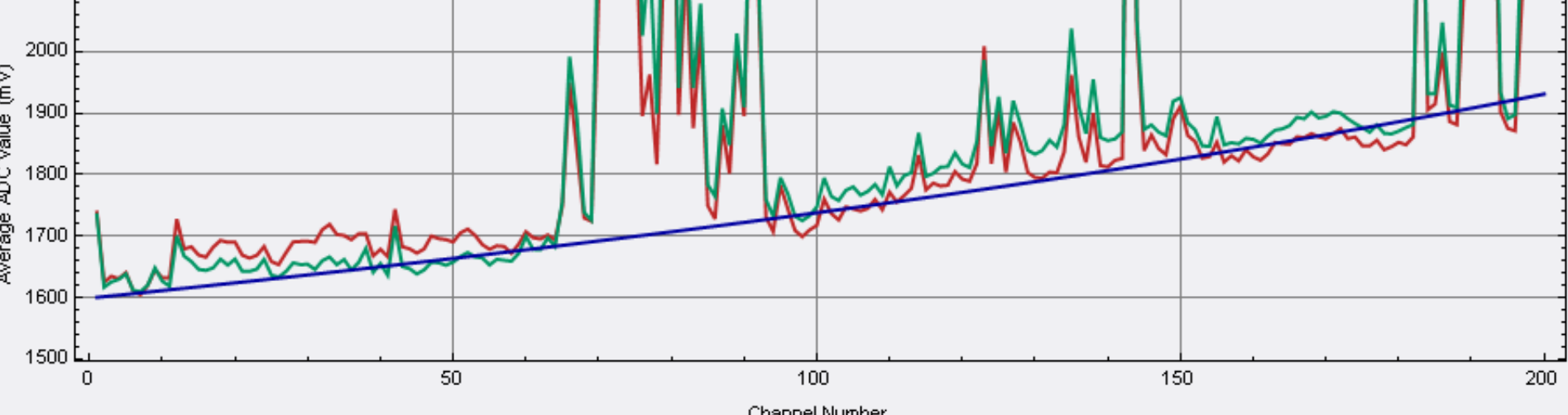
Color file: C:\Program Files\Spectrograph\AJ4CO–Rainbow.txt  
 Color offset: 1500  
 Color gain: 1.2  
 Data: 1717 sweeps  
 Decimated to: 800 sweeps (decimation factor 2.146 )  
 Decimation method: Mean (arithmetic average)  
 RCP ADC range (decimated): 1336 mV min to 3974 mV max  
 LCP ADC range (decimated): 1301 mV min to 3653 mV max



**Continua – Decimated**

RCP & LCP Continua – average of 800 sweeps decimated from 1717 sweeps (180 seconds in original data)

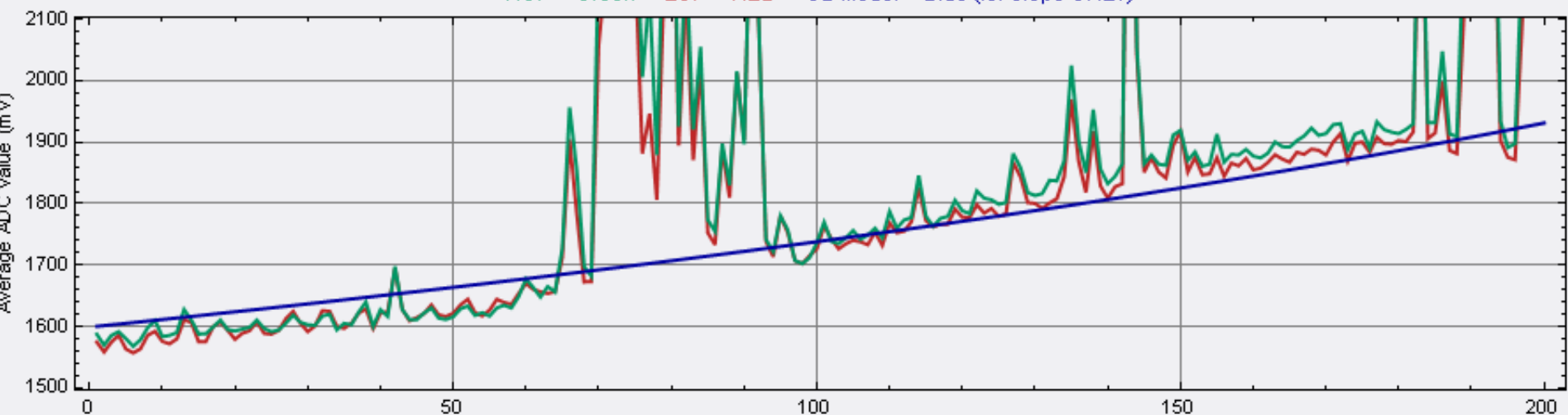
RCP = Green LCP = RED GB Model = Blue (for slope ONLY)



**Continua – Decimated – Correction Array Applied**

RCP & LCP Continua – average of 800 sweeps decimated from 1717 sweeps (180 seconds in original data)

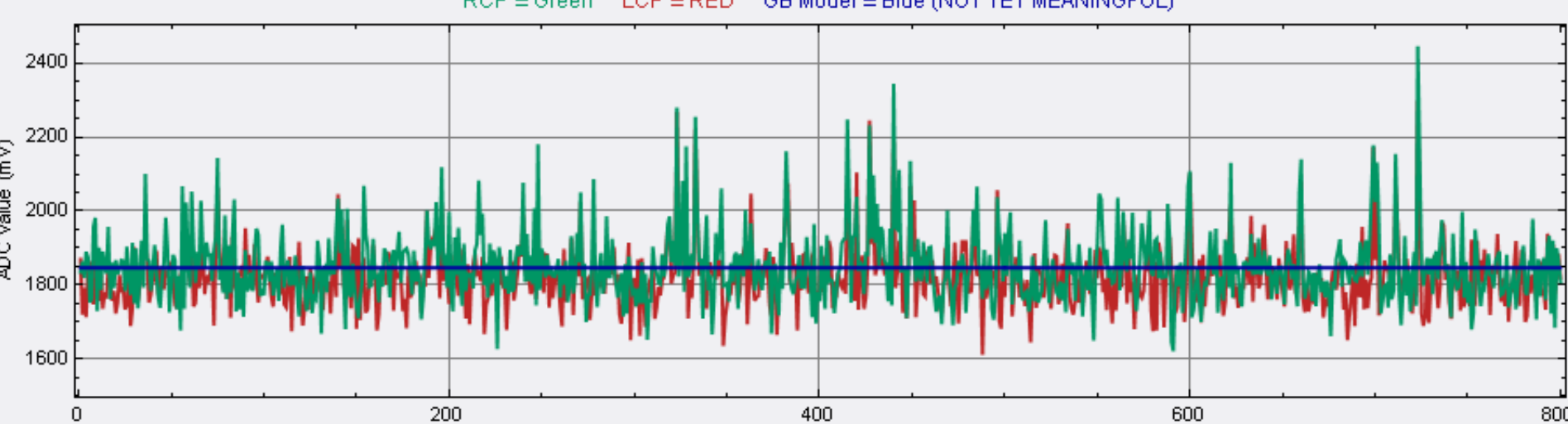
RCP = Green LCP = RED GB Model = Blue (for slope ONLY)



**Strip Chart – Decimated**

RCP & LCP Strip Chart – 800 sweeps decimated from 1717 sweeps – Channel 161

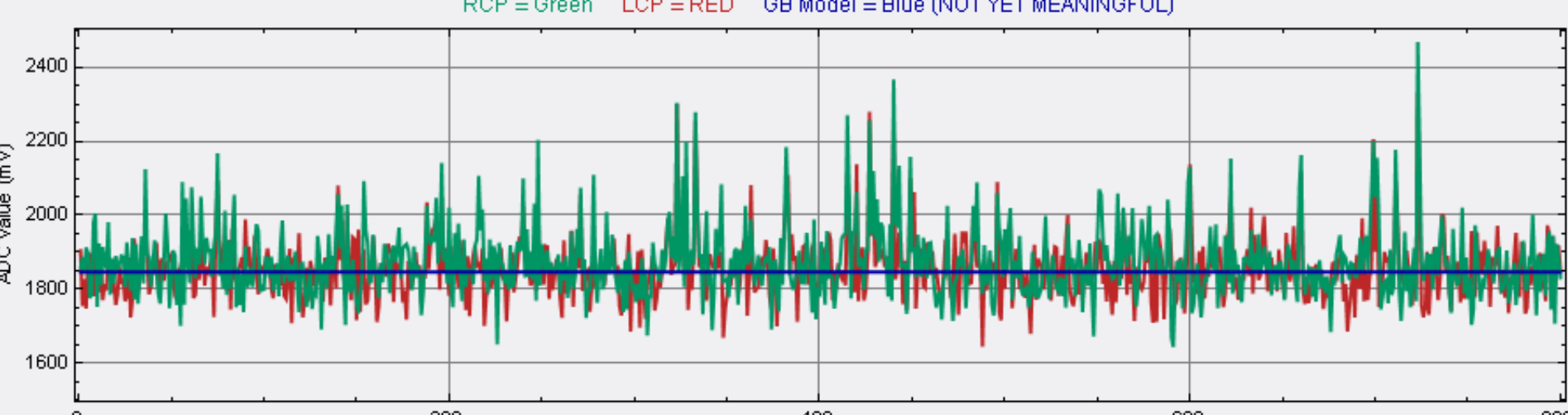
RCP = Green LCP = RED GB Model = Blue (NOT YET MEANINGFUL)



**Strip Chart – Decimated – Correction Array Applied**

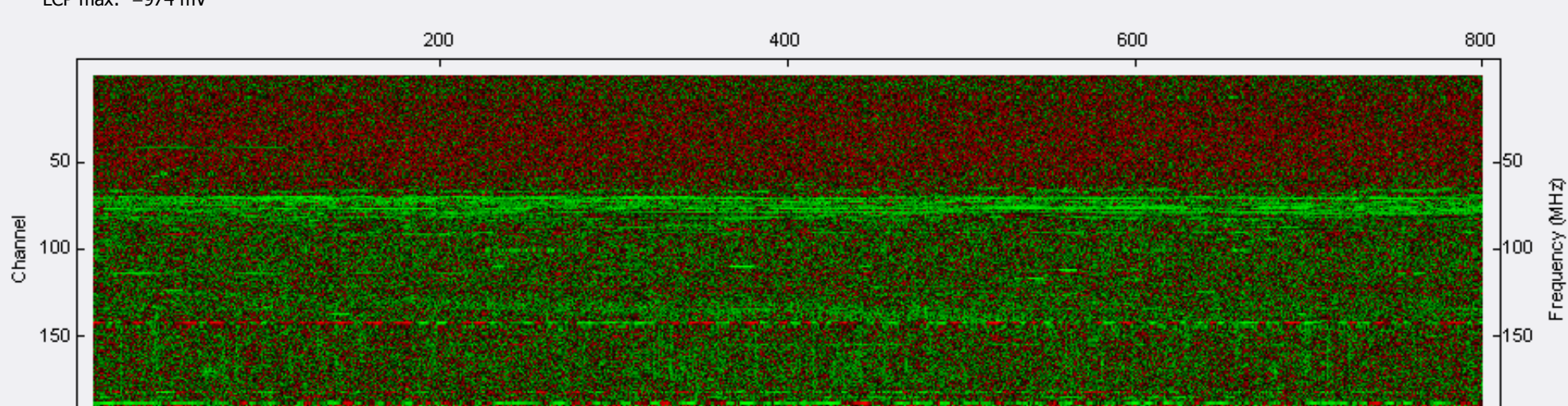
RCP & LCP Strip Chart – 800 sweeps decimated from 1717 sweeps – Channel 161

RCP = Green LCP = RED GB Model = Blue (NOT YET MEANINGFUL)



**Cross Polarization Spectrogram – Decimated**

Color file: C:\Program Files\Spectrograph\CrossPolarization.txt  
 Color offset: –2048  
 Color gain: 3.0  
 Data: 1717 sweeps  
 Decimated to: 800 sweeps (decimation factor 2.146 )  
 Decimation method: Mean (arithmetic average)  
 RCP max: 1165 mV  
 LCP max: –974 mV



**Cross Polarization Spectrogram – Decimated – Correction Array Applied**

Color file: C:\Program Files\Spectrograph\CrossPolarization.txt  
 Color offset: –2048  
 Color gain: 3.0  
 Data: 1717 sweeps  
 Decimated to: 800 sweeps (decimation factor 2.146 )  
 Decimation method: Mean (arithmetic average)  
 RCP max: 1165 mV  
 LCP max: –994 mV

