

File Information – Raw Data

Local name: AJ4CO DPS-XTFD
Input file: R:\Observation Records\AJ4CO_DPS-XTFD\1305\130503\130503172000_rev_pol.sps
RSS version: 2.2.14
Chart start: 03-May-2013 17:20:00.066 UTC
Chart end: 03-May-2013 17:40:00.078 UTC

Local name: AJ4CO DPS-XTFD
Chart location: Florida
Latitude: (N) +29.000000 degrees
Longitude: (E) +82.000000 degrees
Time zone: UTC+0
Observer: Typinski

Data source: < not specified >
Data duration: 1200.012 s
Sweep start: 32.920 MHz
Sweep end: 17.000 MHz
Sweeps: 11445
Sweep rate: 9.537 Hz
Channels: 200
Channel separation: 79.602 kHz
Channel dwell time: 5240 μ s

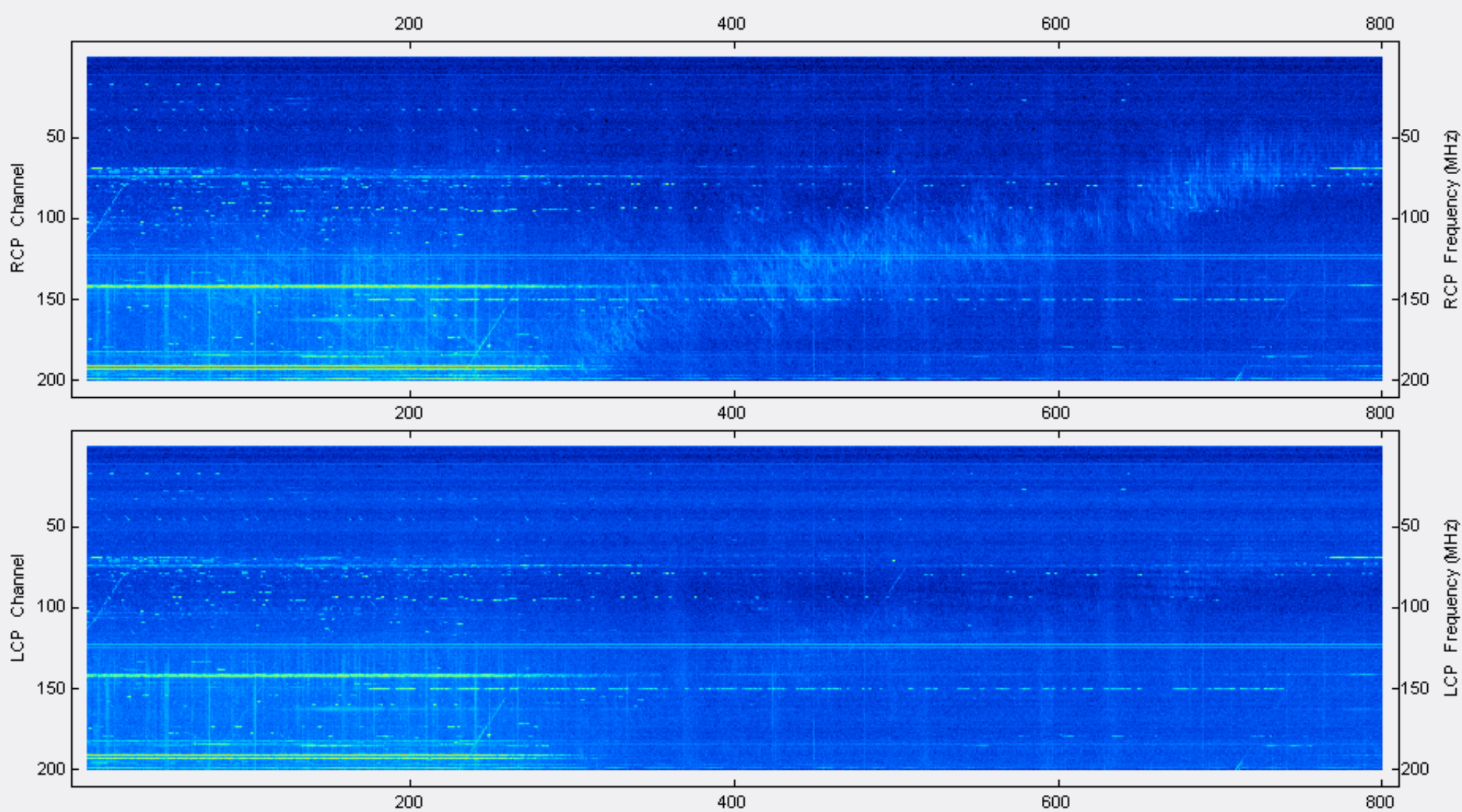
RCP ADC range (raw): 1166 mV min to 3794 mV max
LCP ADC range (raw): 1157 mV min to 3858 mV max

Data note length: 76
Data note: «[|-SWEEPS11445|LOWF17000000|HIF33000000|STEPS200|DUALSPECFILETrue|RVCrY-|]»

Correction array: R:\Observation Records\AJ4CO_DPS-XTFD\1305\130503\130503085000_Correction_Array.csv

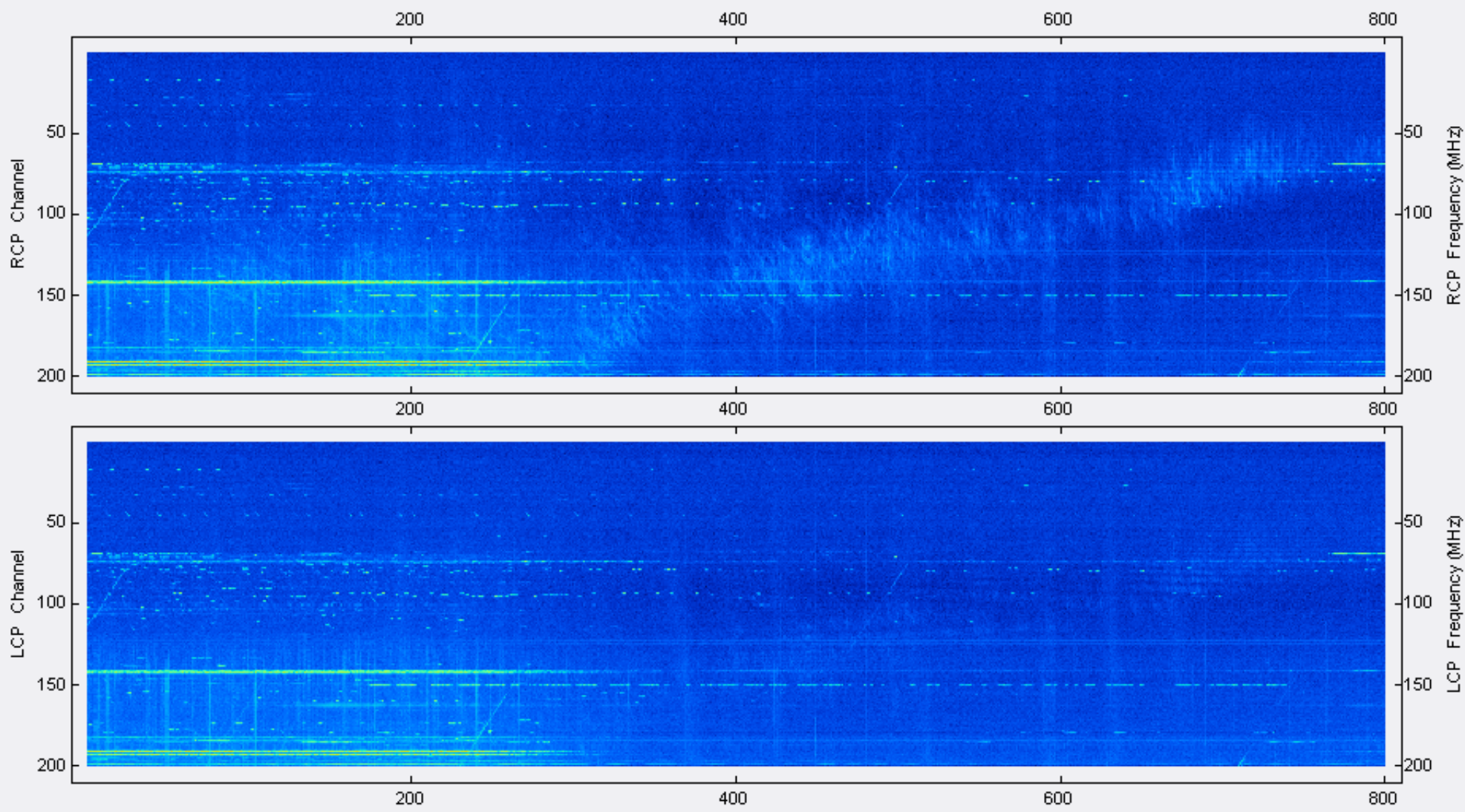
Spectrograms – Decimated

Color file: C:\Program Files\Spectrograph\AJ4CO-Rainbow.txt
Color offset: 1500
Color gain: 1.2
Data: 11445 sweeps
Decimated to: 800 sweeps (decimation factor 14.306)
Decimation method: Mean (arithmetic average)
RCP ADC range (decimated): 1500 mV min to 3501 mV max
LCP ADC range (decimated): 1510 mV min to 3197 mV max



Spectrograms – Decimated – Correction Arrays Applied

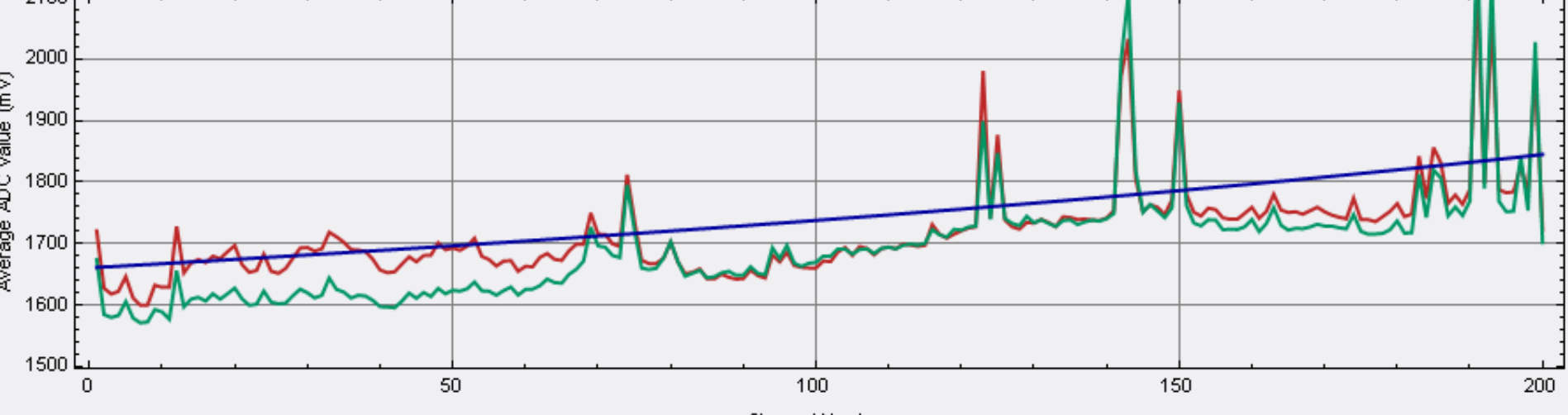
Color file: C:\Program Files\Spectrograph\AJ4CO-Rainbow.txt
Color offset: 1500
Color gain: 1.2
Data: 11445 sweeps
Decimated to: 800 sweeps (decimation factor 14.306)
Decimation method: Mean (arithmetic average)
RCP ADC range (decimated): 1513 mV min to 3501 mV max
LCP ADC range (decimated): 1523 mV min to 3197 mV max



Continua – Decimated

RCP & LCP Continua – average of 800 sweeps decimated from 11445 sweeps (1200 seconds in original data)

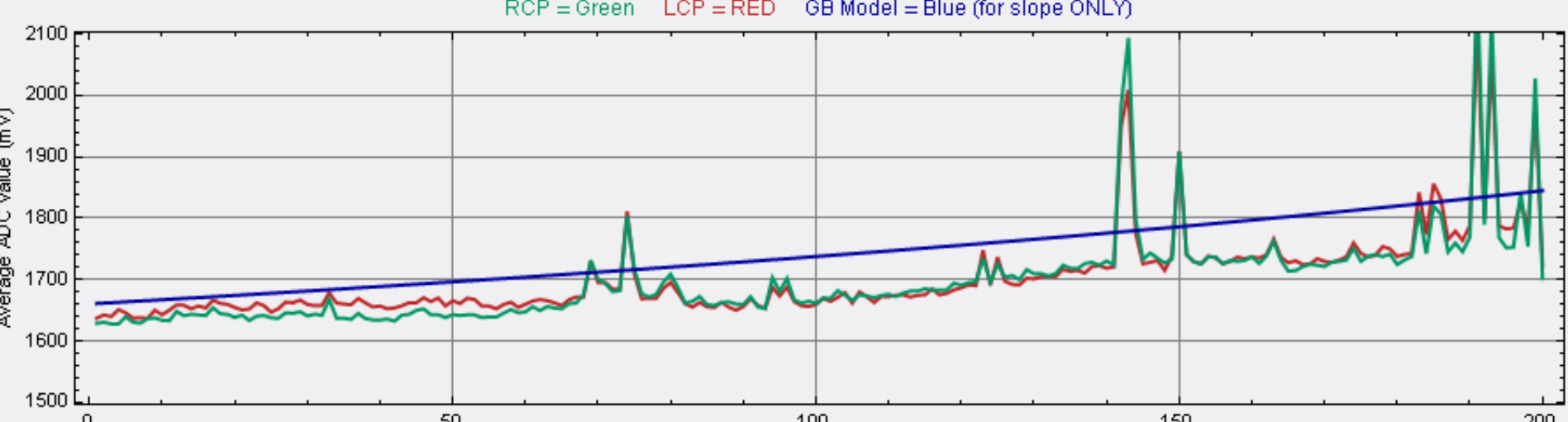
RCP = Green LCP = RED GB Model = Blue (for slope ONLY)



Continua – Decimated – Correction Array Applied

RCP & LCP Continua – average of 800 sweeps decimated from 11445 sweeps (1200 seconds in original data)

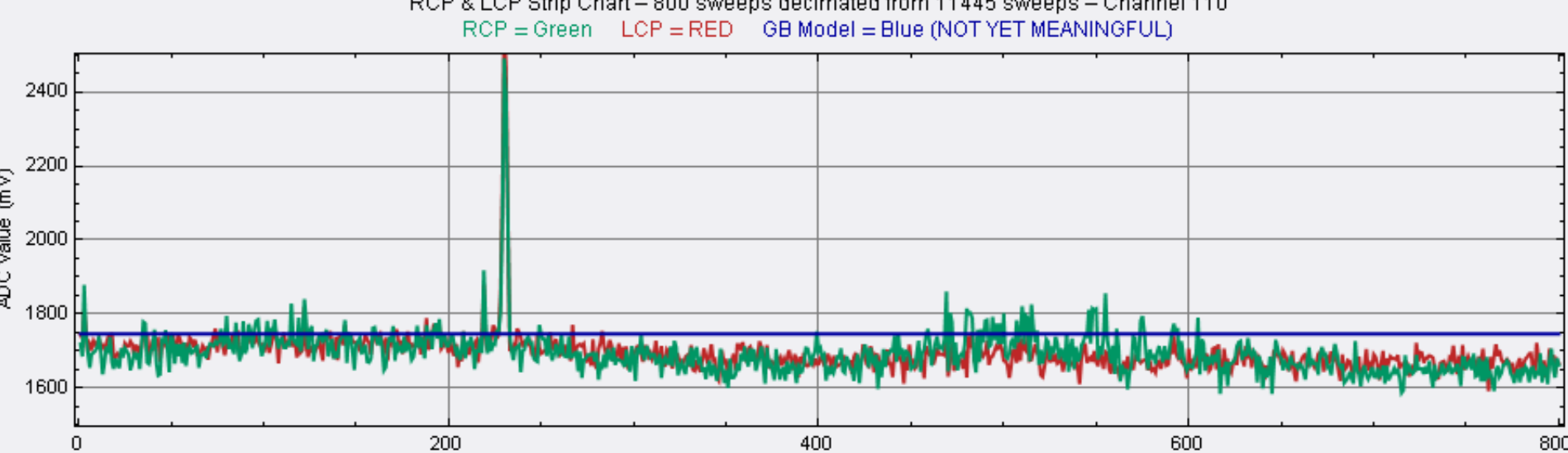
RCP = Green LCP = RED GB Model = Blue (for slope ONLY)



Strip Chart – Decimated

RCP & LCP Strip Chart – 800 sweeps decimated from 11445 sweeps – Channel 110

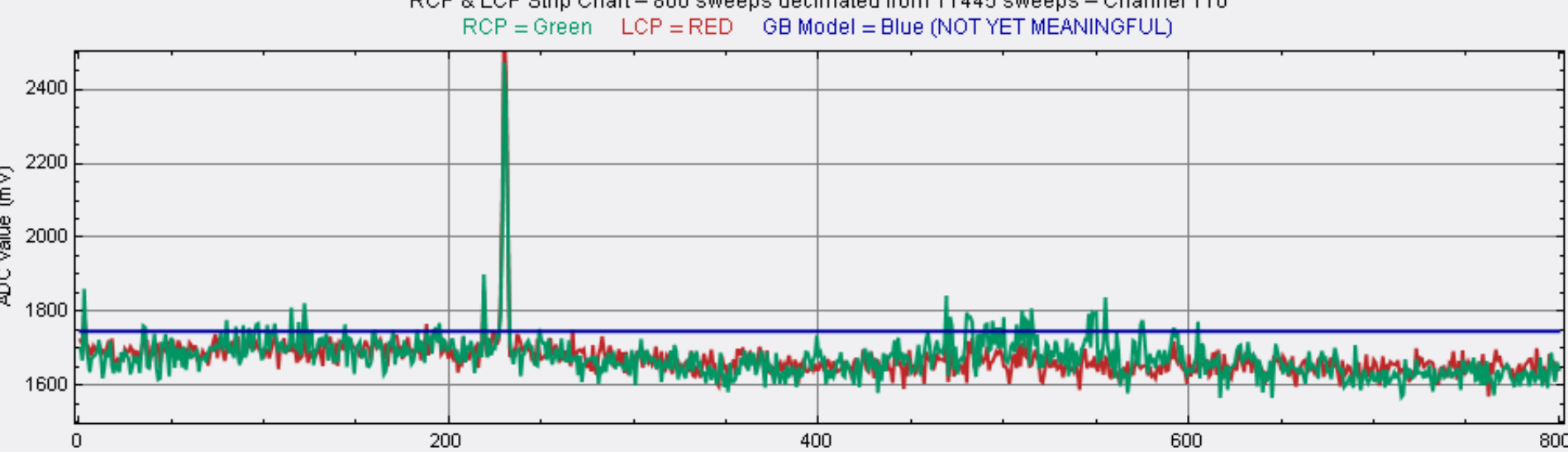
RCP = Green LCP = RED GB Model = Blue (NOT YET MEANINGFUL)



Strip Chart – Decimated – Correction Array Applied

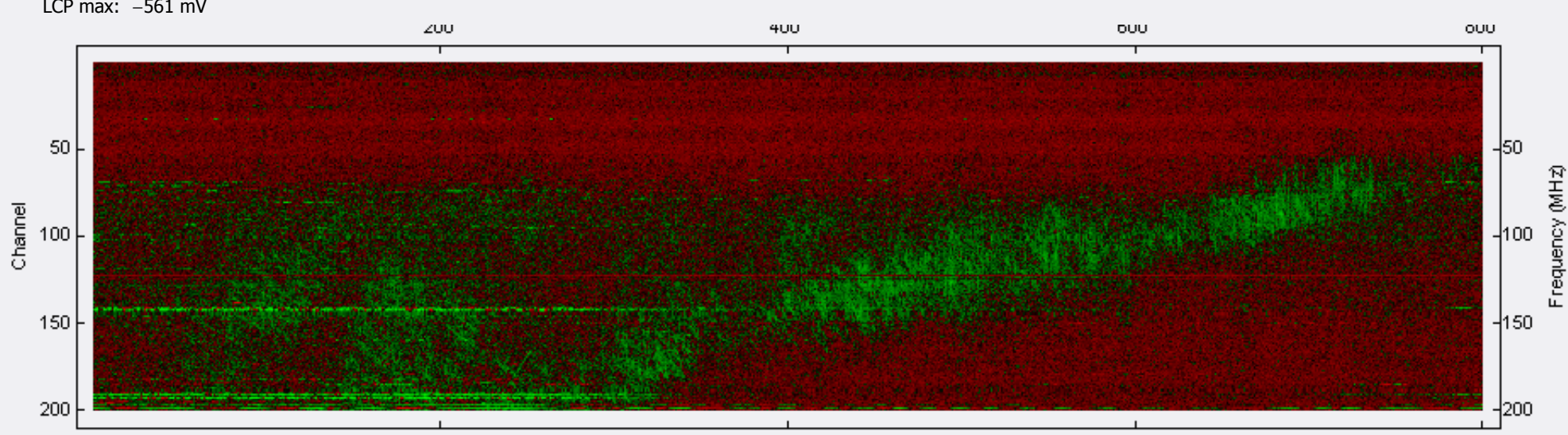
RCP & LCP Strip Chart – 800 sweeps decimated from 11445 sweeps – Channel 110

RCP = Green LCP = RED GB Model = Blue (NOT YET MEANINGFUL)



Cross Polarization Spectrogram – Decimated

Color file: C:\Program Files\Spectrograph\CrossPolarization.txt
Color offset: -2048
Color gain: 3.0
Data: 11445 sweeps
Decimated to: 800 sweeps (decimation factor 14.306)
Decimation method: Mean (arithmetic average)
RCP max: 948 mV
LCP max: -561 mV



Cross Polarization Spectrogram – Decimated – Correction Array Applied

Color file: C:\Program Files\Spectrograph\CrossPolarization.txt
Color offset: -2048
Color gain: 3.0
Data: 11445 sweeps
Decimated to: 800 sweeps (decimation factor 14.306)
Decimation method: Mean (arithmetic average)
RCP max: 948 mV
LCP max: -550 mV

